

Source Tagging Guidelines For Multimedia Products

Sensormatic®

Rev. I
08/31/2006

IMPORTANT
APPLY ONLY ONE (1)
LABEL PER CASE
WITHIN 3" OF UPC
BARCODE

CD Jewel Case



Label Placement

- Apply **one label** per package in the designated label area
- Within 3" from the UPC barcode
- On the same panel as the UPC barcode when possible for single or multiple CD packaging
- Under the tray
- Source tagged 100%

Required Ultra•Max label for source tagging this product

ZLDR9K1

Refer to Product Information material for additional information on these label products.

IMPORTANT
APPLY ONLY ONE (1)
LABEL PER CASE
WITHIN 3" OF UPC
BARCODE

Slipcase Box Set



Label Placement

- Apply one label per package in the designated label area
- Within 3" from the UPC barcode
- On the same panel as the UPC barcode when possible
- On the inside panel surface
- Source tagged 100%

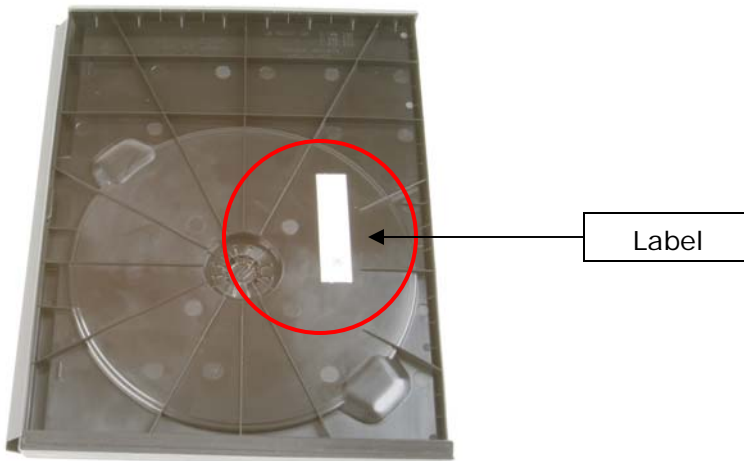
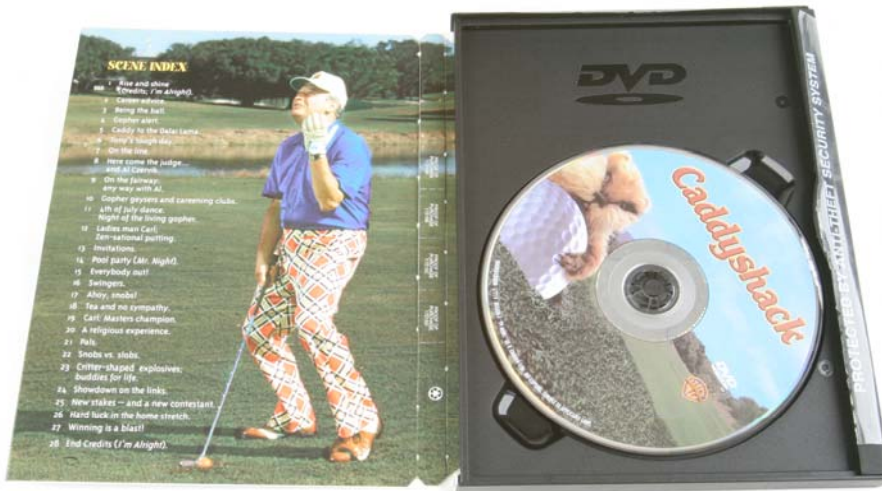
Required Ultra•Max label for source tagging this product

ZLDR7K51 or ZLDR7K55

Refer to Product Information material for additional information on these label products.

IMPORTANT
APPLY ONLY ONE (1)
LABEL PER CASE
WITHIN 3" OF UPC
BARCODE

Ivy Hill or Snapper® DVD Case



Label Placement

- Apply **one label** per package in the designated label area
- Within 3" from the UPC barcode
- On the same panel as the UPC barcode when possible for single or multiple DVD packaging
- Affixed to the tray, vertically on the right side of the tray
- Source tagged 100%

Required Ultra•Max label for source tagging this product

ZLDR7K51 or ZLDR7K55

Refer to Product Information material for additional information on these label products.

IMPORTANT
APPLY ONLY ONE (1)
LABEL PER CASE
WITHIN 3" OF UPC
BARCODE

Standard DVD Amaray Case



Recommended label area
shown in circle – apply
one label within 3" of
barcode

Label Placement

- Apply **one label** per package in the designated label area
- Within 3" from the UPC barcode
- On the same panel as the UPC barcode when possible for single or multiple DVD packaging
- Affixed to the tray
- Source tagged 100%

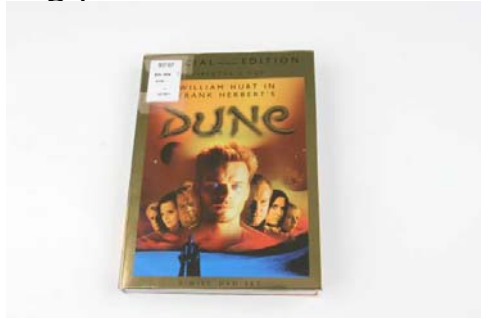
Required Ultra•Max label for source tagging this product

ZLDR7K51 or ZLDR7K55

Refer to Product Information material for additional information on these label products.

IMPORTANT
APPLY ONLY ONE (1)
LABEL PER CASE
WITHIN 3" OF UPC
BARCODE

Digipak[®] DVD Case



Recommended label area
shown in circle – apply
one label within 3" of
barcode

Label Placement

- Apply **one label** per package in the designated label area
- Within 3" from the UPC barcode
- On the same panel as the UPC barcode when possible for single or multiple DVD packaging
- On the paper panel, under the tray
- Inside the pocket of the paperboard sleeve
- Source tagged 100%

Required Ultra•Max label for source tagging this product

ZLDR7K51 or ZLDR7K55

Refer to Product Information material for additional information on these label products.

IMPORTANT
APPLY ONLY ONE (1)
LABEL PER CASE
WITHIN 3" OF UPC
BARCODE

DVD Boxed Set



Label Placement

- Apply **one label** per package in the designated label area
- Within 3" from the UPC barcode
- On the same panel as the UPC barcode when possible
- On the inside surface
- Source tagged 100%

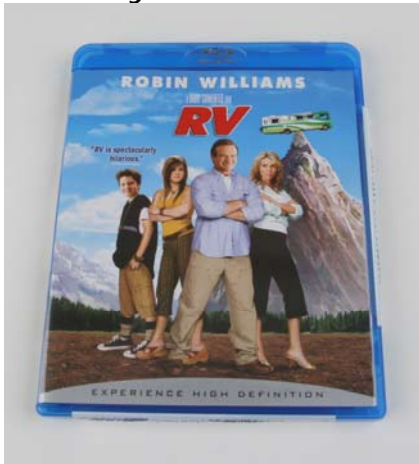
Required Ultra•Max label for source tagging this product

ZLDR7K51 or ZLDR7K55

Refer to Product Information material for additional information on these label products.

IMPORTANT
APPLY ONLY ONE (1)
LABEL PER CASE
WITHIN 3" OF UPC
BARCODE

Blu-Ray DVD Case



Recommended label area
shown in circle – apply
one label within 3" of
barcode



Label Placement

- Apply **one label** per package in the designated label area
- Within 3" from the UPC barcode
- On the same panel as the UPC barcode when possible for single or multiple DVD packaging
- Affixed to the tray
- Source tagged 100%

Required Ultra•Max label for source tagging this product

ZLDR7K51 or ZLDR7K55

Refer to Product Information material for additional information on these label products.

IMPORTANT
APPLY ONLY ONE (1)
LABEL PER CASE
WITHIN 3" OF UPC
BARCODE

HD DVD Case



Recommended label area shown in circle – apply one label within 3" of barcode



Label Placement

- Apply **one label** per package in the designated label area
- Within 3" from the UPC barcode
- On the same panel as the UPC barcode when possible for single or multiple DVD packaging
- Affixed to the tray
- Source tagged 100%

Required Ultra•Max label for source tagging this product

ZLDR7K51 or ZLDR7K55

Refer to Product Information material for additional information on these label products.

IMPORTANT
APPLY ONLY ONE (1)
LABEL PER CASE
WITHIN 3" OF UPC
BARCODE

PSP Game Case



Recommended label area
shown in circle – apply
one label within 3" of
barcode



Label Placement

- Apply **one label** per package in the designated label area
- Within 3" from the UPC barcode
- On the same panel as the UPC barcode when possible
- Affixed to the tray
- Source tagged 100%

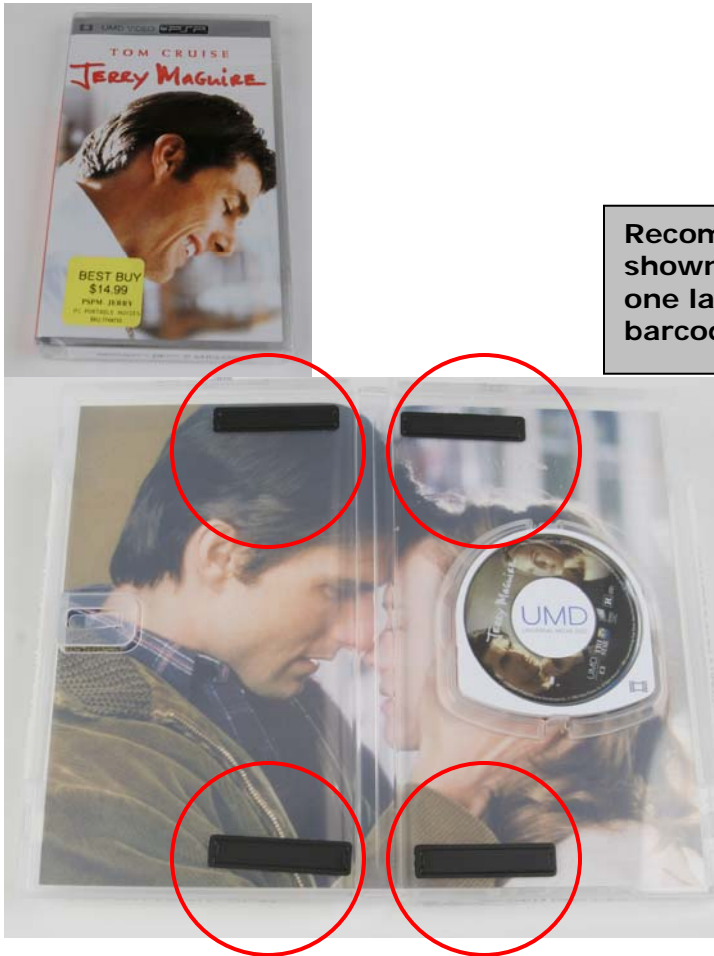
Required Ultra•Max label for source tagging this product

ZLDR7K51 or ZLDR7K55

Refer to Product Information material for additional information on these label products.

IMPORTANT
APPLY ONLY ONE (1)
LABEL PER CASE
WITHIN 3" OF UPC
BARCODE

PSP Movie Case



**Recommended label area
shown in circle – apply
one label within 3" of
barcode**

Label Placement

- Apply **one label** per package in the designated label area
- Within 3" from the UPC barcode
- On the same panel as the UPC barcode when possible
- Affixed to the tray
- Source tagged 100%

Required Ultra•Max label for source tagging this product

ZLDR7K51 or ZLDR7K55

Refer to Product Information material for additional information on these label products.

IMPORTANT
APPLY ONLY ONE (1)
LABEL PER CASE
WITHIN 3" OF UPC
BARCODE

PS2 Game Case



Recommended label area
shown in circle – apply
one label within 3" of
barcode



Label Placement

- Apply **one label** per package in the designated label area
- Within 3" from the UPC barcode
- On the same panel as the UPC barcode when possible
- Affixed to the tray
- Source tagged 100%

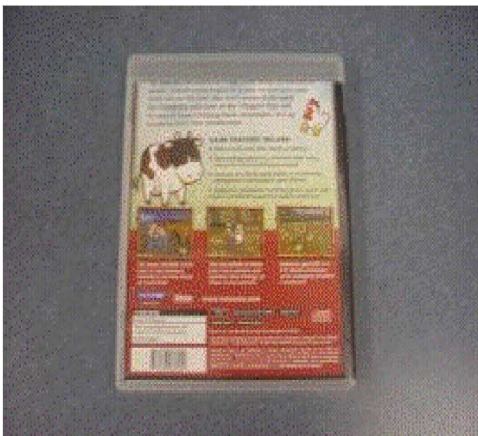
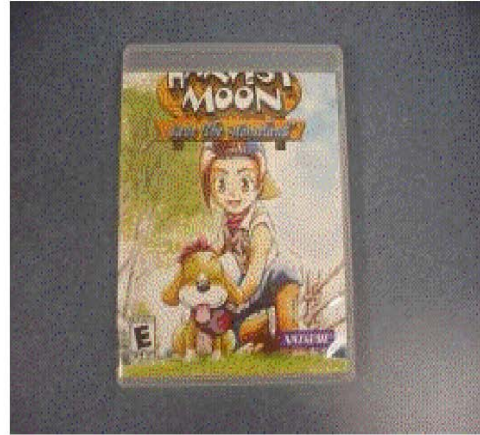
Required Ultra•Max label for source tagging this product

ZLDR7K51 or ZLDR7K55

Refer to Product Information material for additional information on these label products.

PS3 Game Case

IMPORTANT
APPLY ONLY ONE (1)
LABEL PER CASE
WITHIN 3" OF UPC
BARCODE



**Recommended label area
shown in circle – apply
one label within 3" of
barcode**

Label Placement

- Apply **one label** per package in the designated label area
- Within 3" from the UPC barcode
- On the same panel as the UPC barcode when possible
- Affixed to the tray
- Source tagged 100%

Required Ultra•Max label for source tagging this product

ZLDR7K51 or ZLDR7K55

Refer to Product Information material for additional information on these label products.

IMPORTANT
APPLY ONLY ONE (1)
LABEL PER CASE
WITHIN 3" OF UPC
BARCODE

Xbox 360 Game Case



Recommended label area
shown in circle – apply
one label within 3" of
barcode



Label Placement

- Apply **one label** per package in the designated label area
- Within 3" from the UPC barcode
- On the same panel as the UPC barcode when possible
- Affixed to the tray
- Source tagged 100%

Required Ultra•Max label for source tagging this product

ZLDR7K51 or ZLDR7K55

Refer to Product Information material for additional information on these label products.

IMPORTANT
APPLY ONLY ONE (1)
LABEL PER CASE
WITHIN 3" OF UPC
BARCODE

Xbox Game Case



Recommended label area shown in circle – apply one label within 3" of barcode



Label Placement

- Apply **one label** per package in the designated label area
- Within 3" from the UPC barcode
- On the same panel as the UPC barcode when possible
- Affixed to the tray
- Source tagged 100%

Required Ultra•Max label for source tagging this product

ZLDR7K51 or ZLDR7K55

Refer to Product Information material for additional information on these label products.

GameCube Game Case



IMPORTANT
APPLY ONLY ONE (1)
LABEL PER CASE
WITHIN 3" OF UPC
BARCODE

Recommended label area
shown in circle – apply
one label within 3" of
barcode



Label Placement

- Apply **one label** per package in the designated label area
- Within 3" from the UPC barcode
- On the same panel as the UPC barcode when possible
- Affixed to the tray
- Source tagged 100%

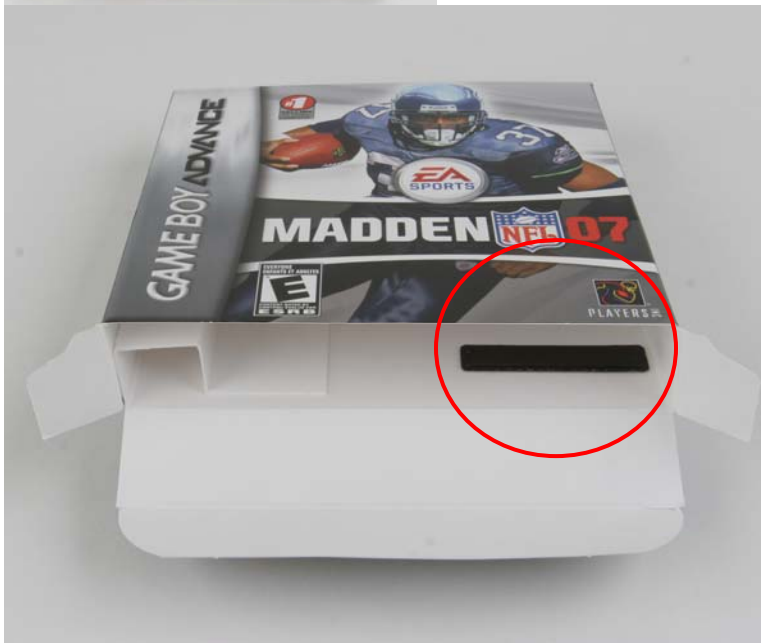
Required Ultra•Max label for source tagging this product

ZLDR7K51 or ZLDR7K55

Refer to Product Information material for additional information on these label products.

IMPORTANT
APPLY ONLY ONE (1)
LABEL PER CASE
WITHIN 3" OF UPC
BARCODE

GameBoy Advance Game Case



Recommended label area
shown in circle – apply
one label within 3" of
barcode

Label Placement

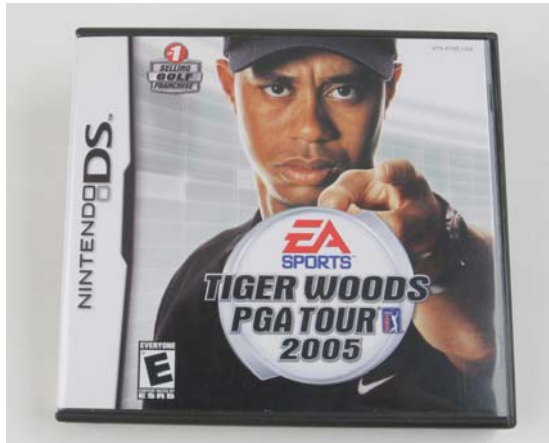
- Apply one label per package in the designated label area
- Within 3" from the UPC barcode
- On the same panel as the UPC barcode when possible
- On the inside panel surface
- Source tagged 100%

Required Ultra•Max label for source tagging this product

ZLDR7K51 or ZLDR7K55

Refer to Product Information material for additional information on these label products.

DS Game Case



IMPORTANT
APPLY ONLY ONE (1)
LABEL PER CASE
WITHIN 3" OF UPC
BARCODE

Recommended label area
shown in circle – apply
one label within 3" of
barcode



Label Placement

- Apply **one label** per package in the designated label area
- Within 3" from the UPC barcode
- On the same panel as the UPC barcode when possible
- Affixed to the tray
- Source tagged 100%

Required Ultra•Max label for source tagging this product

ZLDR7K51 or ZLDR7K55

Refer to Product Information material for additional information on these label products.